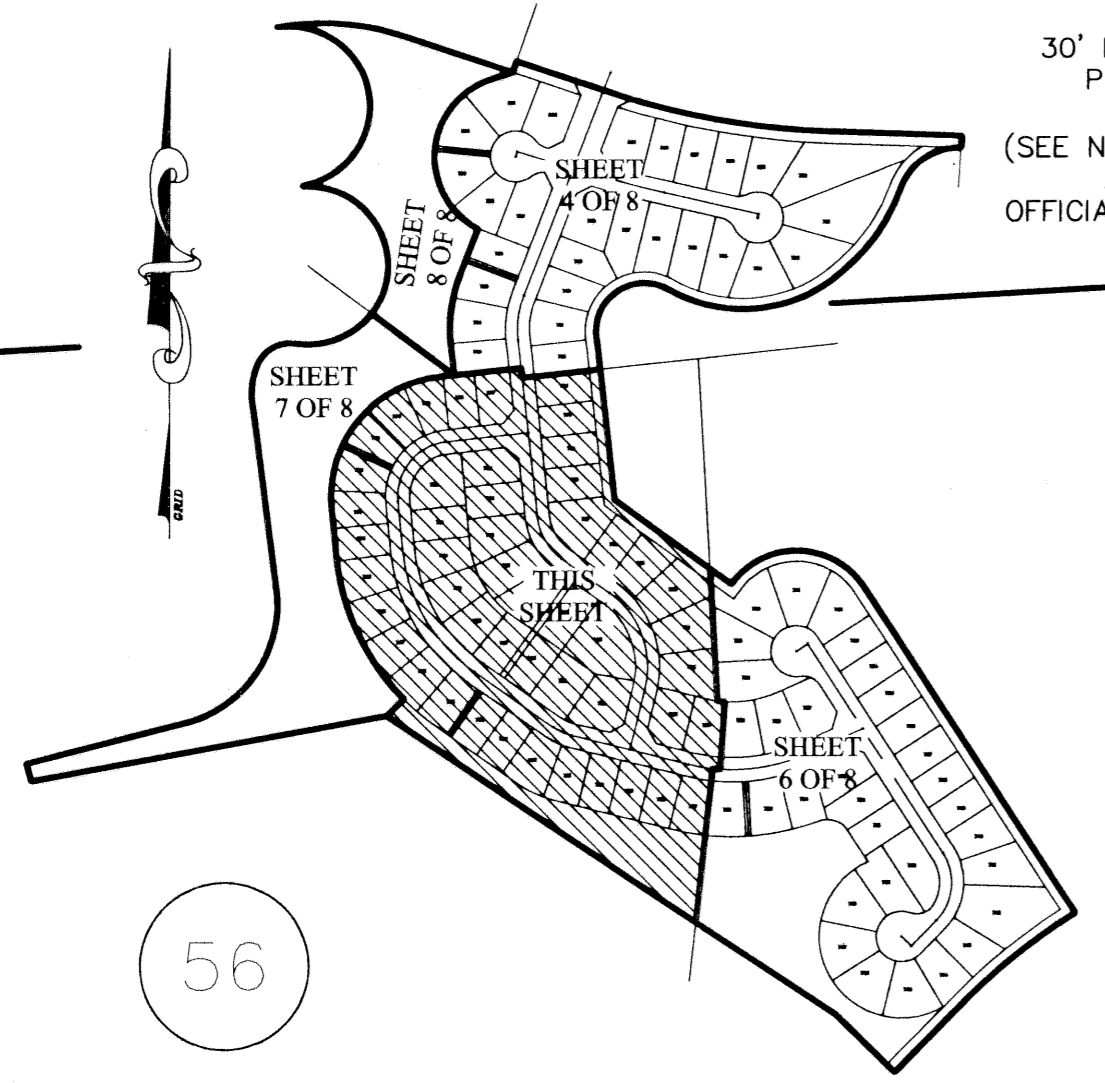


SHEET INDEX



30' ROAD RIGHT OF WAY PER PLAT BOOK 2, PAGES 45-54 (SEE NOTE 9, SHEET 2 OF 8) ABANDONED PER OFFICIAL RECORD BOOK 5518, PAGE 562

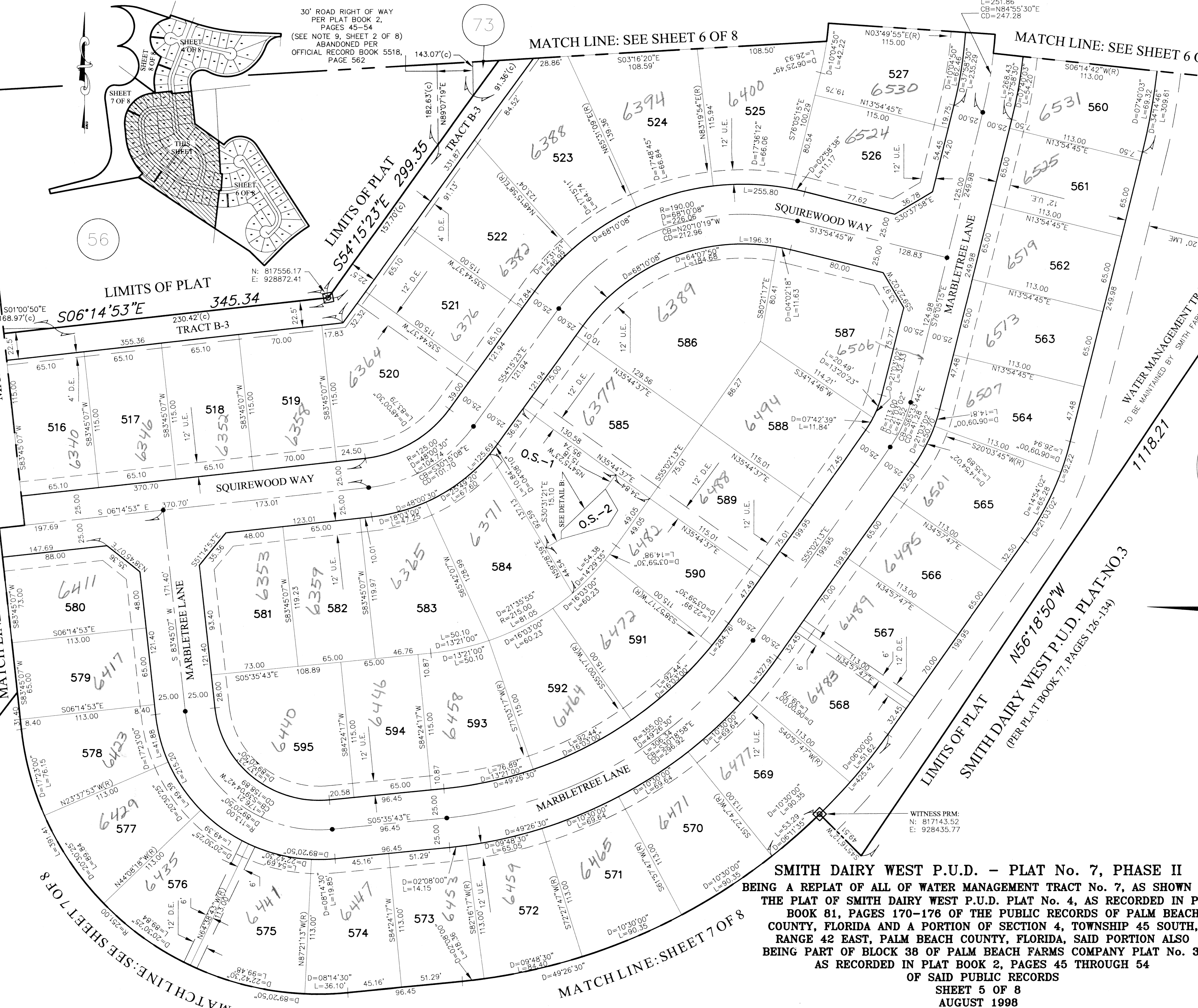
MATCH LINE: SEE SHEET 6 OF 8

MATCH LINE: SEE SHEET 6 OF 8

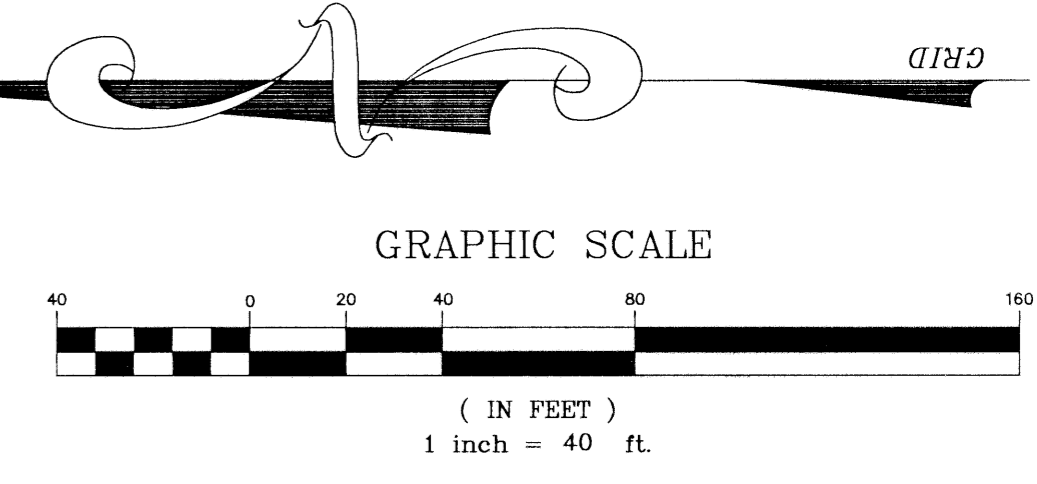
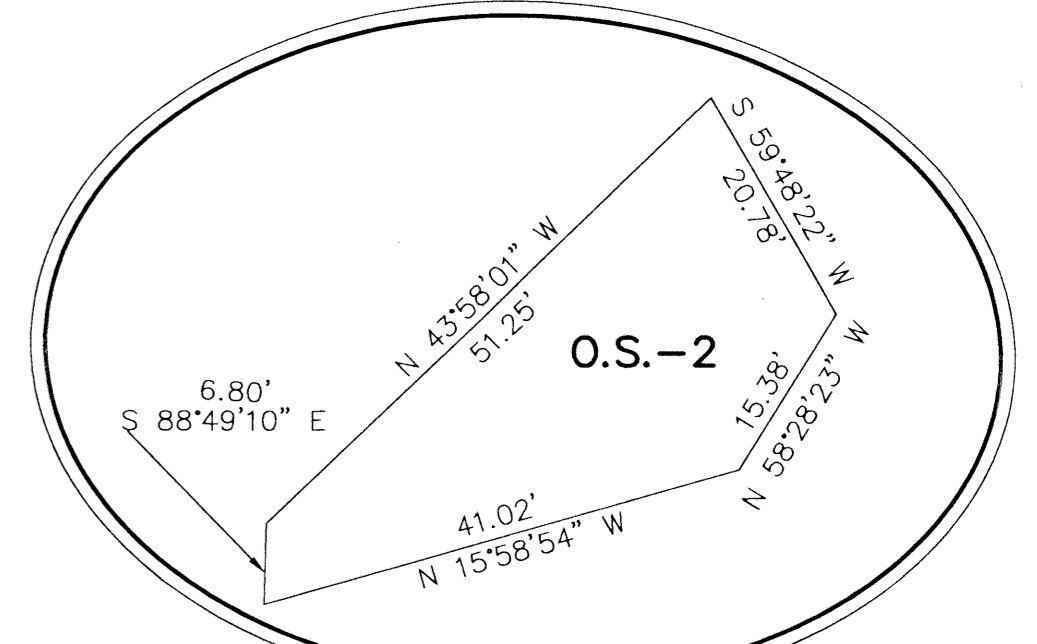
R=380.00
D=37°58'30"
L=251.86
CB=N84°55'30"E
CD=247.28

MATCH LINE: SEE SHEET 4 OF 8

MATCH LINE: SEE SHEET 4 OF 8



DETAIL: B (NOT TO SCALE)



LEGEND:

- ◻ = PERMANENT REFERENCE MONUMENT "P.L.S. 4828"
- = PERMANENT CONTROL POINT "P.C.P. 4828"
- L-R = RADIUS
- D = ARC LENGTH
- Δ = DELTA (CENTRAL ANGLE)
- PC = POINT OF CURVATURE
- CB = CHORD BEARING
- CD = CHORD DISTANCE
- P.U.D. = PLANNED UNIT DEVELOPMENT
- PSM = PROFESSIONAL SURVEYOR & MAPPER
- PLS = PROFESSIONAL LAND SURVEYOR
- U.E. = UTILITY EASEMENT
- D.E. = DRAINAGE EASEMENT
- LME = LAKE MAINTENANCE EASEMENT
- N = NORTHING (GRID)
- E = EASTING (GRID)
- (C) = CALCULATED
- (R) = RADIAL
- LAE = LIMITED ACCESS EASEMENT
- P.R.M. = PERMANENT REFERENCE MONUMENT
- L.B. = LICENSED BUSINESS
- 56 = TRACT NO. 56, BLOCK 38, PALM BEACH FARMS COMPANY PLAT No. 3 (PER PLAT BOOK 2, PAGE 45-54)

SMITH DAIRY WEST P.U.D. - PLAT No. 7, PHASE II BEING A REPLAT OF ALL OF WATER MANAGEMENT TRACT No. 7, AS SHOWN ON THE PLAT OF SMITH DAIRY WEST P.U.D. PLAT No. 4, AS RECORDED IN PLAT BOOK 81, PAGES 170-176 OF THE PUBLIC RECORDS OF PALM BEACH COUNTY, FLORIDA AND A PORTION OF SECTION 4, TOWNSHIP 45 SOUTH, RANGE 42 EAST, PALM BEACH COUNTY, FLORIDA, SAID PORTION ALSO BEING PART OF BLOCK 38 OF PALM BEACH FARMS COMPANY PLAT No. 3, AS RECORDED IN PLAT BOOK 2, PAGES 45 THROUGH 54 OF SAID PUBLIC RECORDS

SHEET 5 OF 8
AUGUST 1998

SCALE: 1"=40'
DATE: AUGUST 1998



SMITH DAIRY WEST P.U.D. - PLAT No. 7, PHASE II

2560 RCA Blvd. Suite 105
Palm Beach Gardens, Florida 33410
(561) 627-5200
D.B.P.R. Business License No. 4318

DRAWING NUMBER
94014CR

SENDER: Smith Dairy West
BOOK: 84
PAGE: 79
FLOOD MAP # 1704
ZONING: PUD
COUNTY: 49
ZIP CODE: 33467
PLS: 942
PUD NAME: Smith Dairy West

42779